

The Ziibiwing Center will remain **OPEN** on Michigan Indian Day - Friday, September 22, 2017

E-Noodaagan

A Bi-Weekly Electronic Publication
from the Ziibiwing Center

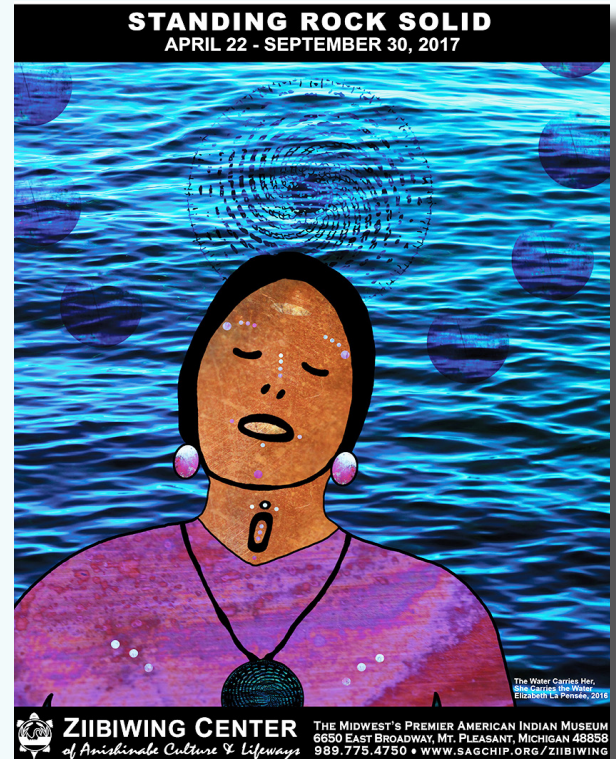
 **ZIIBIWING CENTER**
of Anishinabe Culture & Lifeways

Waabibagaa-Giizis
(Moon of the Leaves Turning Color)
September, 2017

STANDING ROCK SOLID exhibition will remain on display at Ziibiwing thru September 30, 2017. Once or twice a year the Ziibiwing Center offers a temporary exhibit with a culturally relevant theme in its Changing Exhibit Gallery. This year we have been pleased to provide an eclectic, beautiful and meaningful display of artwork in solidarity with the Standing Rock Sioux tribe and others who work to protect our dear and oft-mistreated Mother Earth.

In addition to the artistic display, there have been supporting events such as a Sacred Water Symposium, cultural speakers, film and teachings. We are grateful to all who have attended and supported these events. We encourage continued interest, energy, prayer and determination in effecting positive change for the many essential environmental protections still needed.

Come and experience this important and moving exhibition for yourself. Open Monday thru Saturday from 10am to 6pm. You'll be glad you did!



Visit the photo gallery at
www.sagchip.org/ziibiwing



ATTENTION EDUCATORS!

Tuesday thru Friday
Sept. 1 to Nov. 30
(Based on Availability)

AMERICAN INDIAN HERITAGE SPECIAL

Song & Dance Presentations and Museum Tours



\$4 Per Student
or Chaperone
\$2 Per Educator
Limited Space

Catered lunch and craft activities
optional (prices vary)

Contact Glenna to register at 989.775.4744 or ghallivill@sagchip.org

Smithsonian magazine

museum day live!

FREE ADMISSION
AT PARTICIPATING MUSEUMS

SATURDAY 9|23|2017

ZIIBIWING CENTER
AN OFFICIAL VENUE

September 23, 2017
10am-6pm

FREE ADMISSION WITH
DOWNLOADABLE TICKET

PRINTED OR
ACCESSIBLE ON
MOBILE DEVICE

The Museum Day Live! ticket
provides free admission for two people.

Museum Day Live!
is an annual celebration
of boundless curiosity hosted by
Smithsonian magazine.

Participating museums and
cultural institutions
across the country
provide entry to anyone presenting
a Museum Day Live! ticket.

Where will your curiosity lead you
on Museum Day Live!?

Let us know @MuseumDay
#BoundlessCuriosity
#MuseumDayLive

For tickets visit: www.smithsonianmag.com/museumday/tickets/

Anishinabe Culture • Education • Fun!

FREE & OPEN
to the PUBLIC



SEPTEMBER 16
12PM-4PM

2017
**MONARCH
BUTTERFLY
CELEBRATION**

All Ages!
Door Prizes
Face Painting
Butterfly Dance
Cookie Decoration
Butterfly Teachings
Children's Activities

Kids and Culture at ZIIBIWING

September 16, 2017 • 12pm-4pm
and
December 16, 2017 • 12pm-4pm

Visit them all!

Kids & Culture 2017
Culture, Learning & the Arts
FREE events in Mt. Pleasant

- January 21, 10 a.m. - 12 p.m.
Art Reach of Mid Michigan
- February 18, 10 a.m. - 12 p.m.
Art Reach of Mid Michigan
- March 18, 10 a.m. - 12 p.m.
CMU Museum of Cultural & Natural History
- April 15, 10 a.m. - 12 p.m.
Art Reach of Mid Michigan
- May 20, 10 a.m. - 12 p.m.
Off Broadway Performing Arts Studio
- June 17, 10 a.m. - 12 p.m.
Mt. Pleasant Discovery Museum
- July 15, 10 a.m. - 12 p.m.
Broadway Theatre
- August 19, 10 a.m. - 12 p.m.
Mt. Pleasant Discovery Museum
- September 16, 12 p.m. - 4 p.m.**
Ziibiwing Cultural Center
- October 21, 10 a.m. - 12 p.m.
CMU Museum of Cultural & Natural History
- November 18, 10 a.m. - 12 p.m.
Chippewa River District Library -
Veterans Memorial
- December 16, 12 p.m. - 4 p.m.**
Ziibiwing Cultural Center



Ziibiwing Center • 6650 E. Broadway, Mt. Pleasant, MI 48858 • Open Mon-Sat • 10am-6pm

For more information call (989) 775-4750 or visit us at www.sagchip.org/ziibiwing

Published by the Ziibiwing Center, The Saginaw Chippewa Indian Tribe of Michigan • Copyright © 2017 - All rights reserved